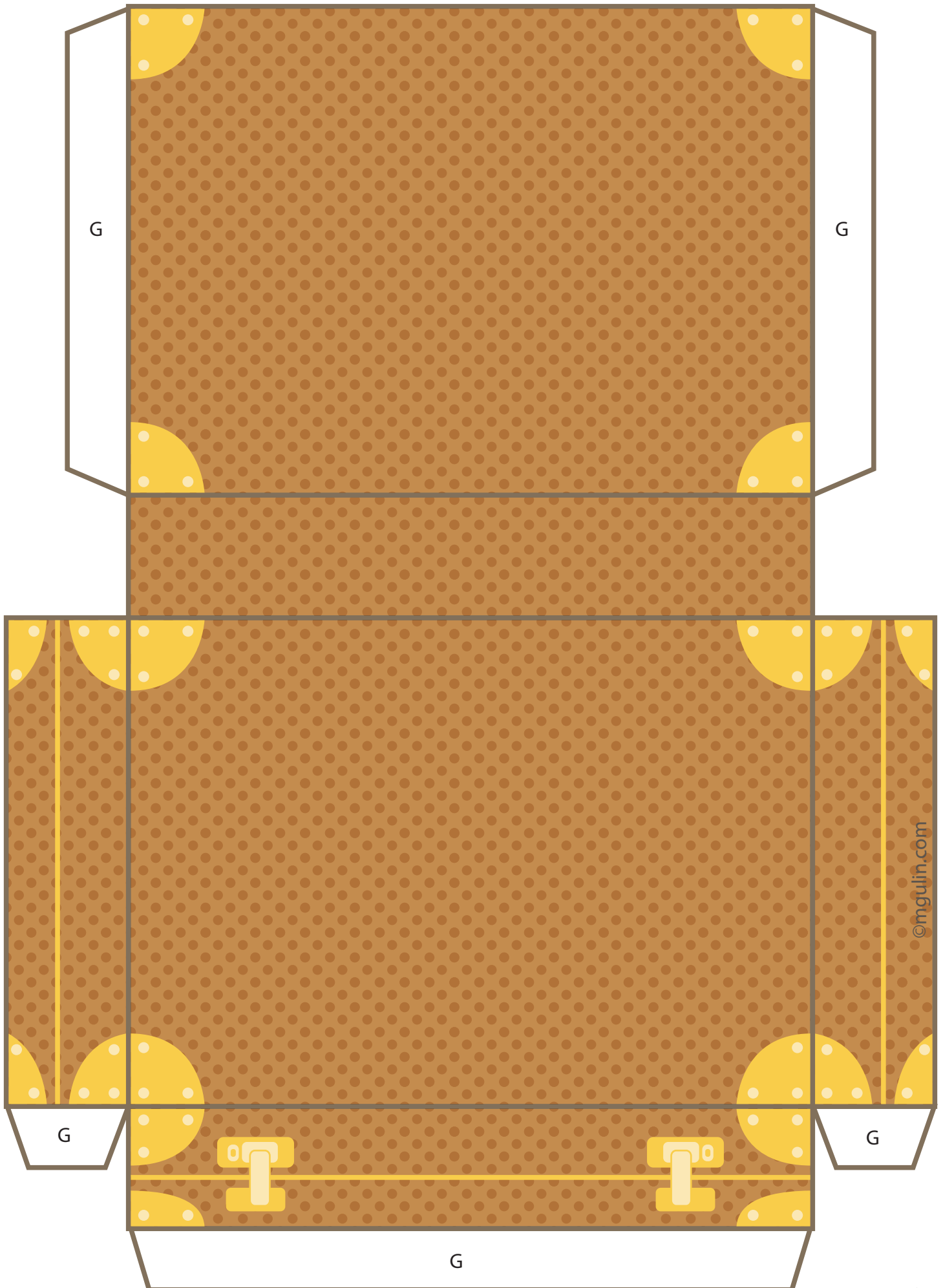
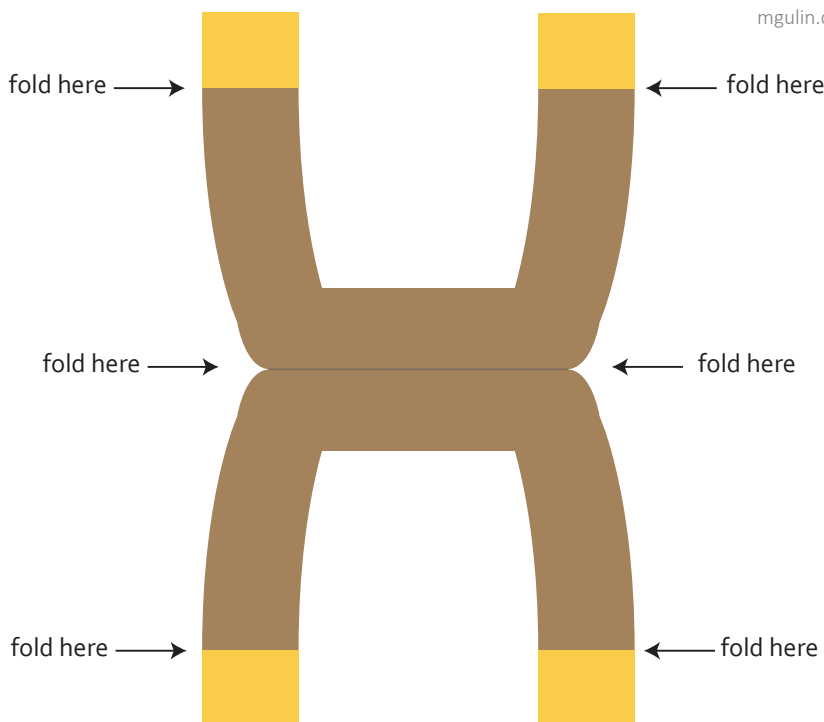
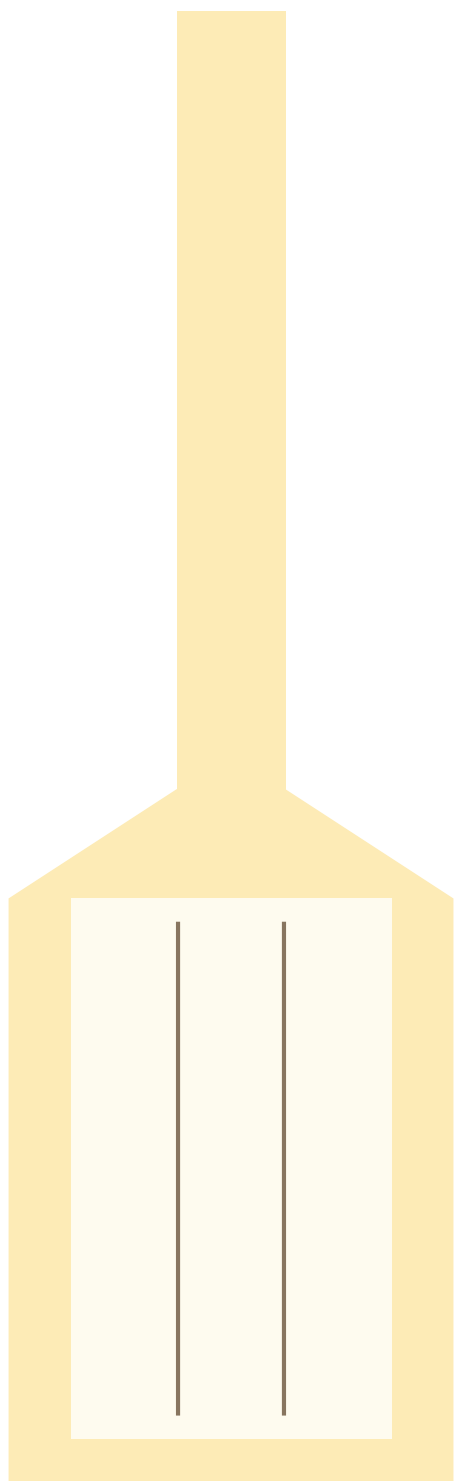


Travel Suitcase





Assembly instructions

1. Print out your the Travel Suitecas on regular paper or cardstock.
2. Cut out the all the parts.Fold inwards along the red line seen on the figure below.
- 3.Put glue on the parts marked with a G and assemble the suitcase from page 1.
4. Fold along the suitcase handle base and put glue on the bottom of the folded piece. Glue the handle to the top of the suitecas.
5. Attach the travel tag to the handle by gluing the strap to the back of the tag once you slipped it through the handle.

